



Kollective Browser-Based Peering Solution

Scale Live Video with WebRTC Technology

SOLUTION BRIEF

Business communications have transformed and your workforce requires real-time live video collaboration. Kollective's enterprise content delivery network (ECDN) can help you exceed expectations by delivering high-quality video to all employees, regardless of their location, device or bandwidth capacity. We use WebRTC technology to scale live video distribution via your web browser. It's as easy as that and there's no need to install software, buy hardware or invest in additional network infrastructure. Kollective's solution provides the following:

Simplicity

Auto-provision your ECDN trial in six clicks

Kollective is the ONLY WebRTC solution that lets you sign up, choose your integration, configure it, and try it immediately – for FREE!

Intelligence

Confidently deliver high-quality video streams

Our browser-based solution uses smart peering algorithms that tune to your network, delivering the intelligence you need – no agent required.

Control

Scale live video to the network edge

From out-of-the-box configurations to advanced bitrate and playback controls, Kollective puts the power of peering in your hands.

Analytics

Customize live events and network insights

Instantly see your aggregate performance metrics or dig into the data down to a single node or endpoint with Kollective IQ Analytics.

Seamless Integrations



Microsoft Teams



Microsoft Stream



Skype



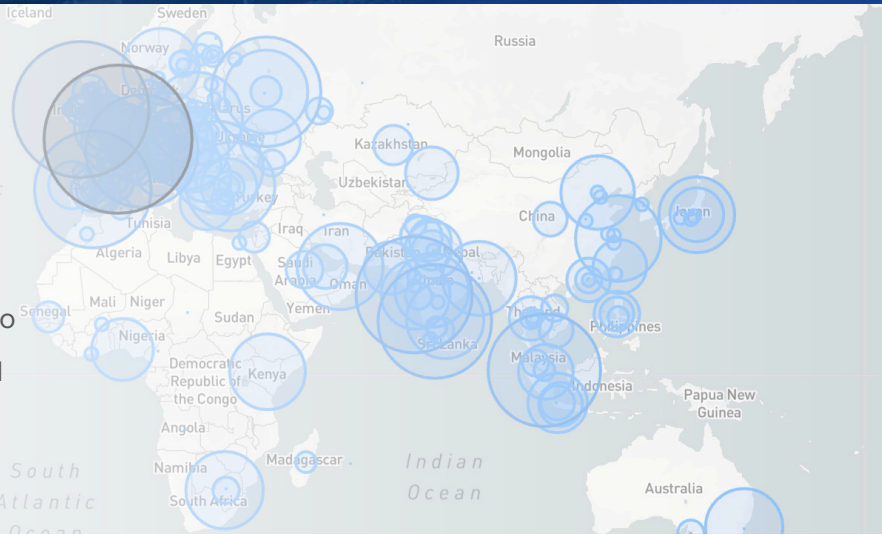
Intrado Studio



Brightcove

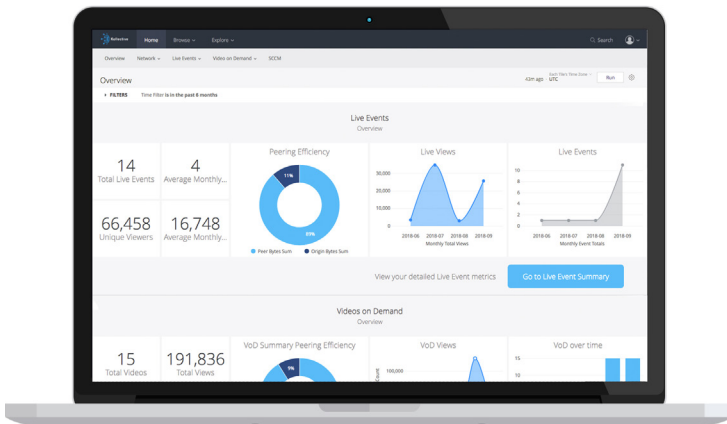
Flex with Your Workforce

Whether your personnel are working in the office, at home or remotely, we make it easy to quickly understand your network's ability to serve live video. This enables you to deliver high-quality video while achieving the greatest peering efficiency and bandwidth savings.



Secure by Design

Collective Browser-Based Peering is architected using standard web-based protocols with all data transfers encrypted and signed. We do not receive, store or process customer content, nor are we able to decrypt the source content.



Make Smarter Decisions Faster

Our analytics dashboard, Collective IQ, is intuitively designed to make it easy to find and consume the data that is most relevant to your role. Whether you are an event producer, communications manager or network administrator, we've designed a workflow that simplifies data exploration to help you make intelligent decisions, fast.

Trial Collective Browser-Based Peering for FREE

It only takes your IT admin six clicks to add Collective Browser-Based Peering to your network. Sign up for a 30-day FREE trial and start scaling live events today.

[Sign Up for a FREE Trial](#)